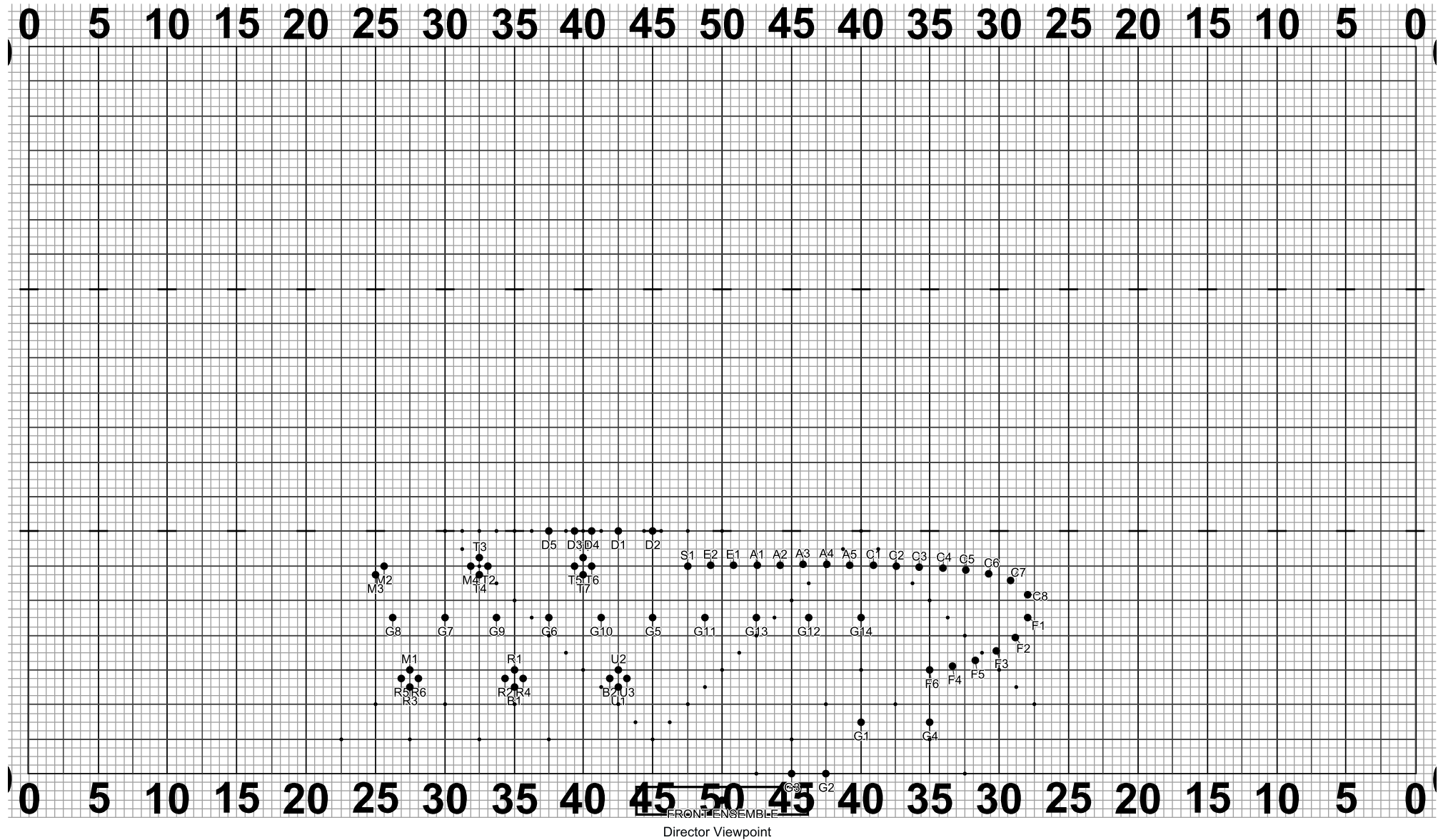


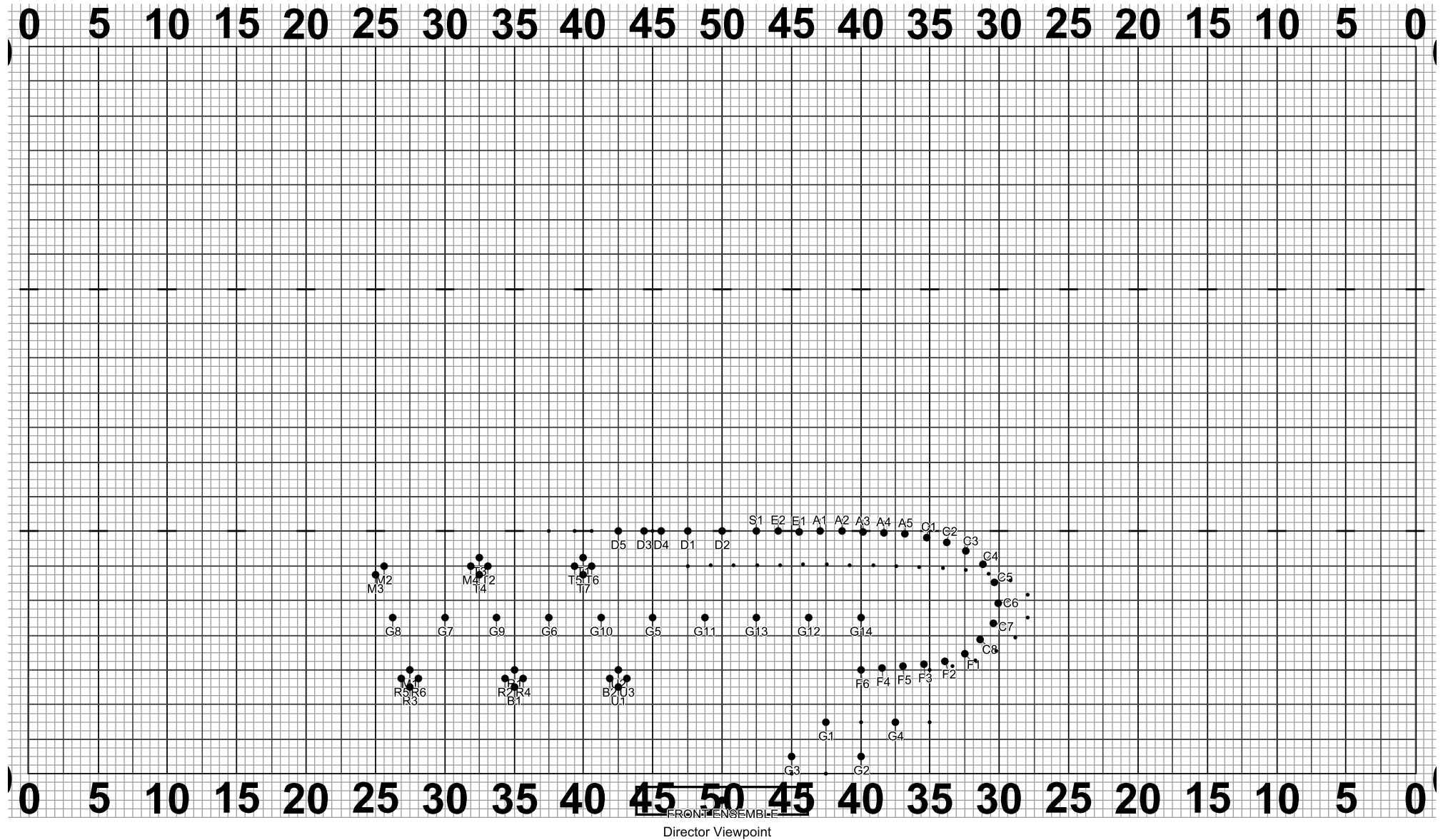
Set #9 Counts: 4 Measures: 1

Hold 4



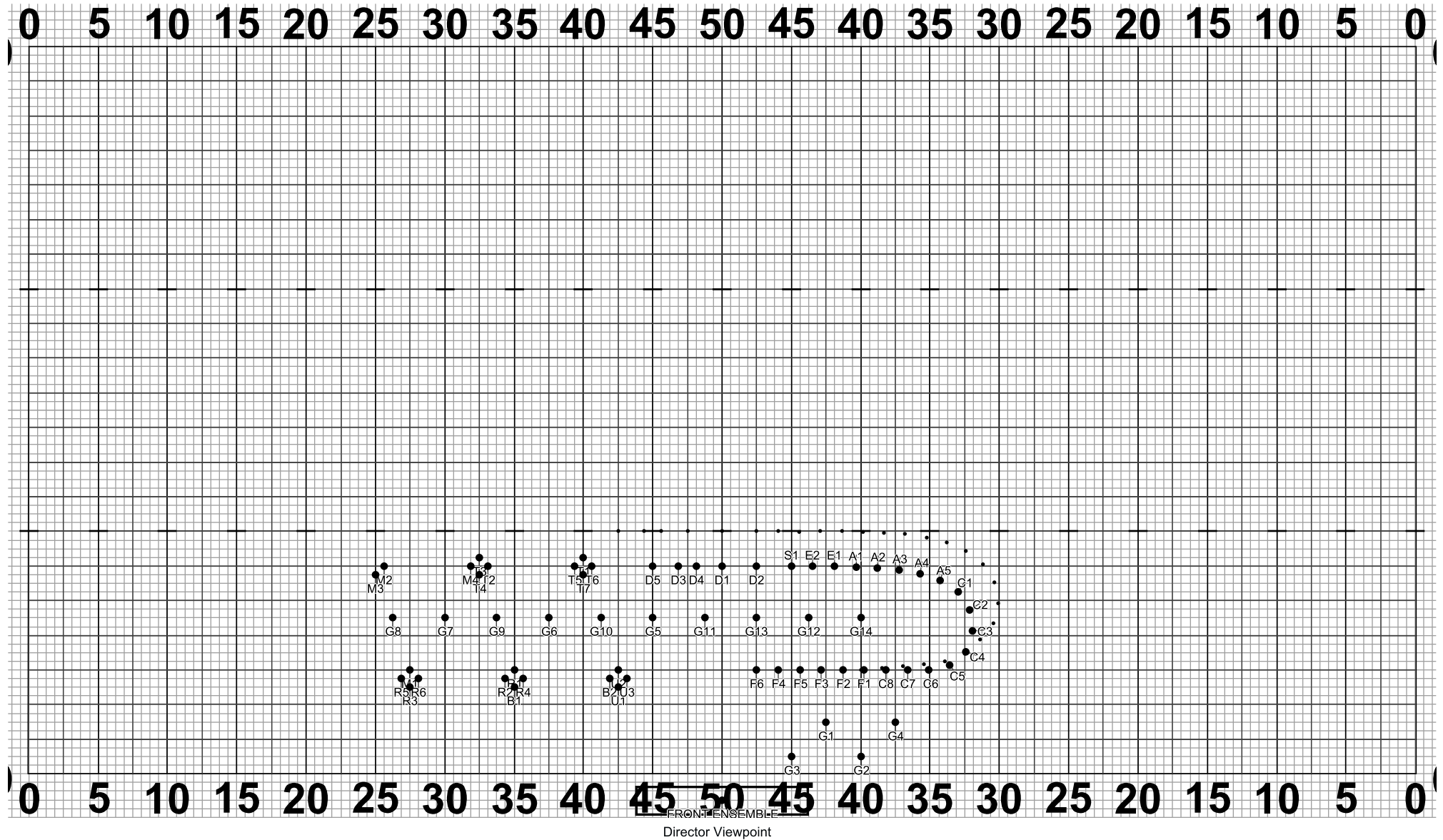
Set #10 Counts: 16 Measures: 2-5

Move 8
Side 1 flags curve paths as needed to avoid winds



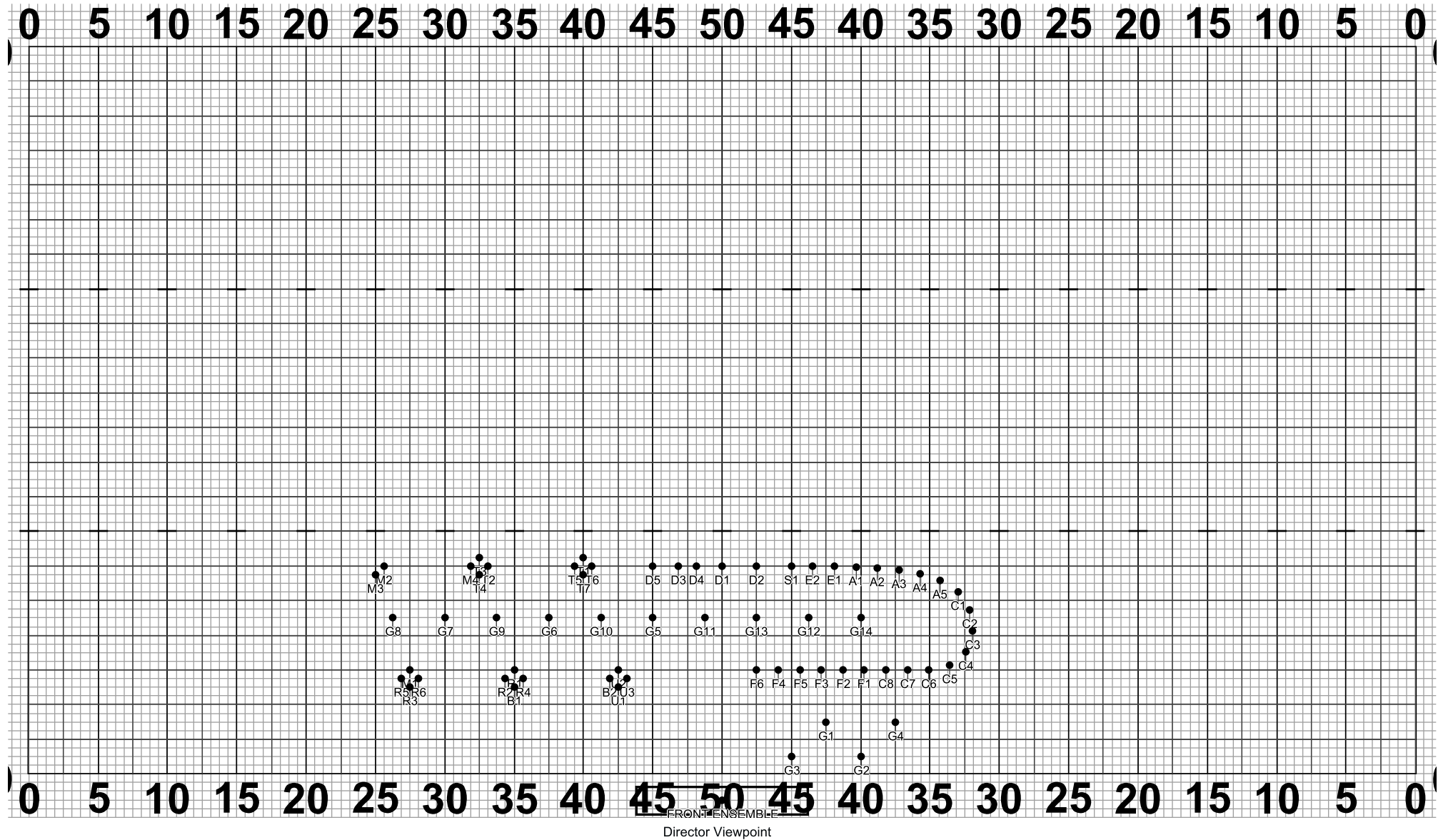
Set #11 Counts: 8 Measures:

Move 8



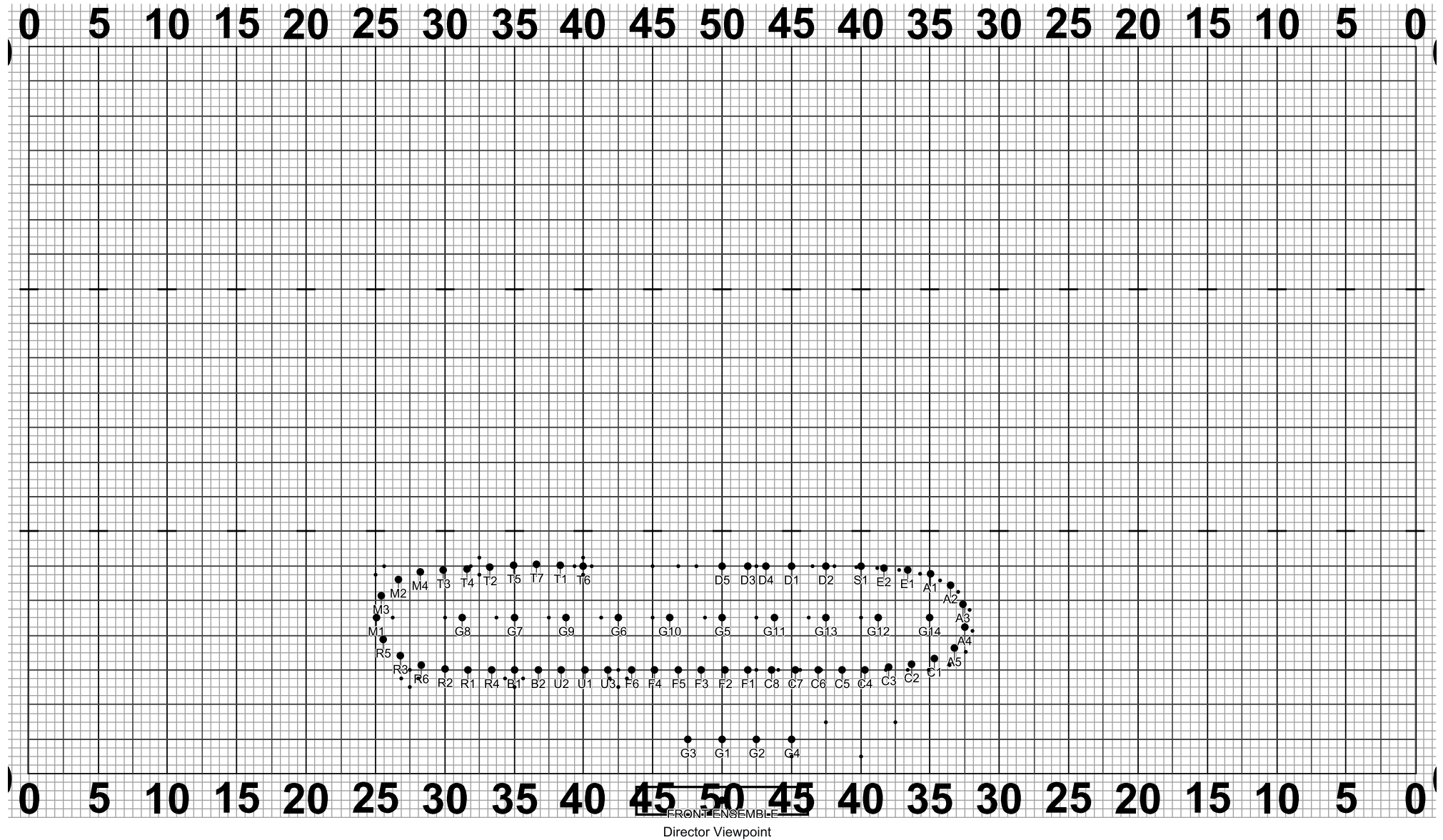
Set #12 Counts: 12 Measures: 6-10

Move 12



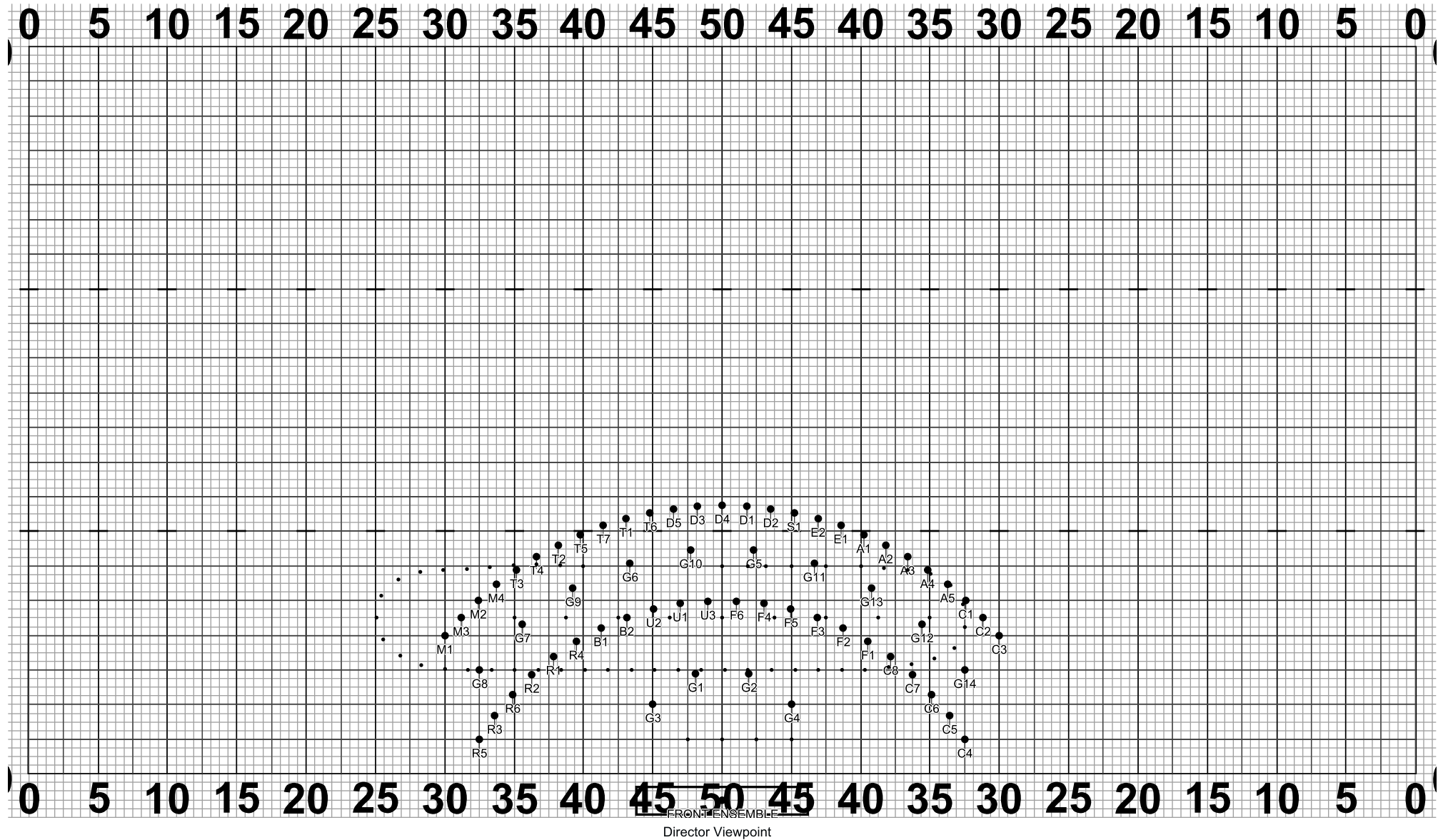
Set #13 Counts: 4 Measures: 11

Hold 4



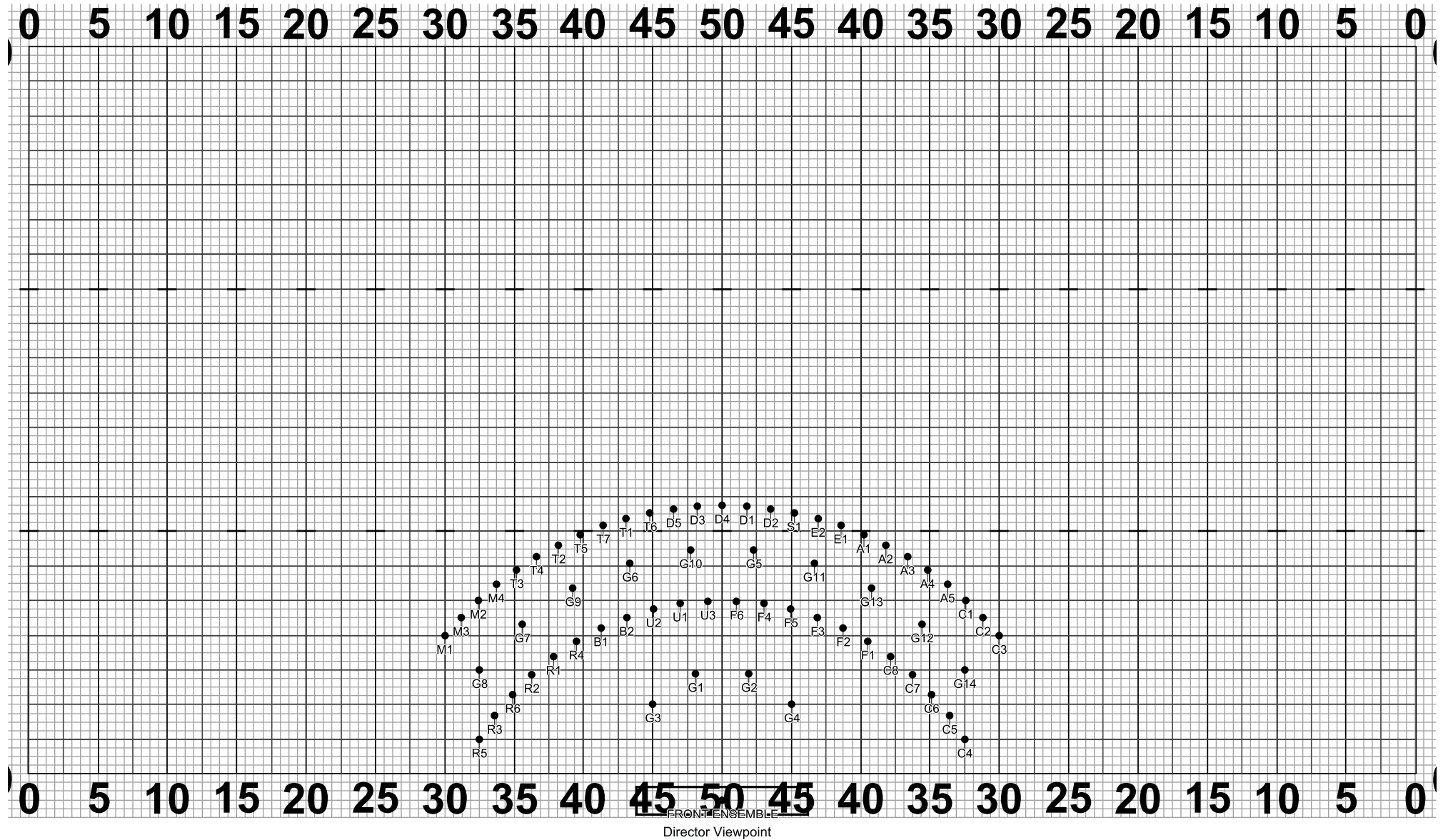
Set #14 Counts: 16 Measures: 12-15

Move 16



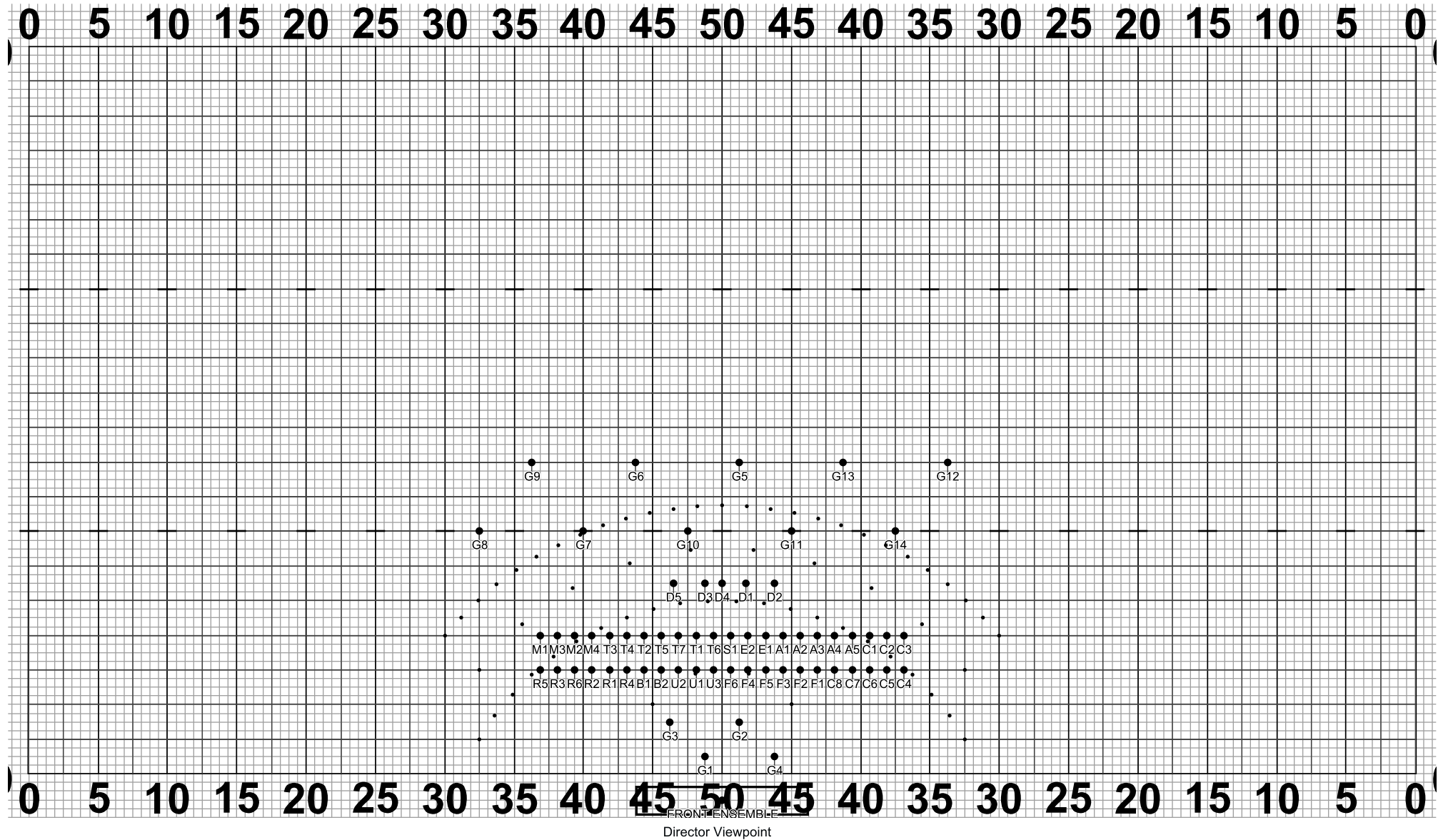
Set #15 Counts: 16 Measures: 16-19

Move 16
G14 curve paths as needed
Adjust guard staging as needed to accomodate the work



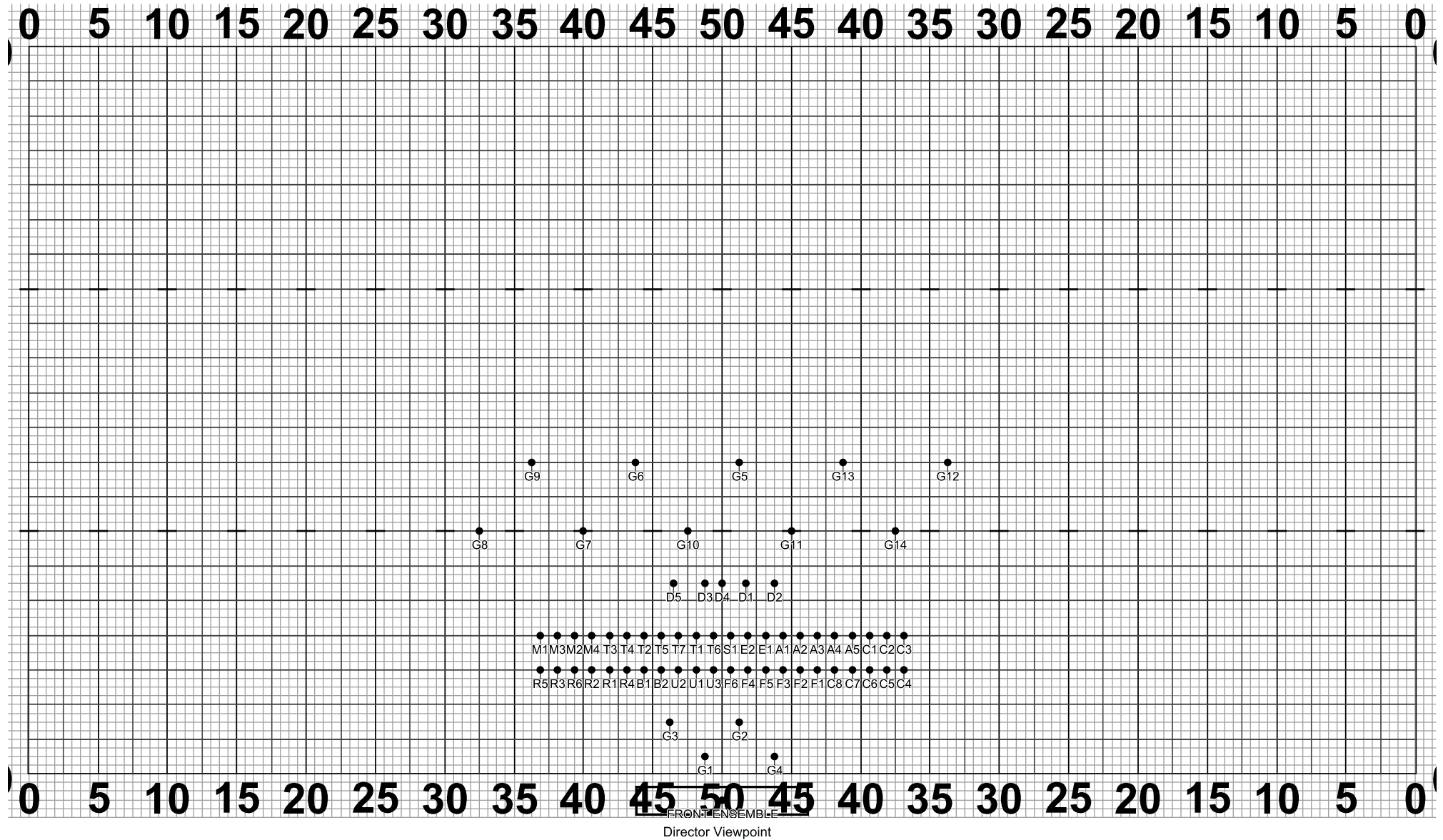
Set #16 Counts: 32 Measures: 20-27

Hold 32



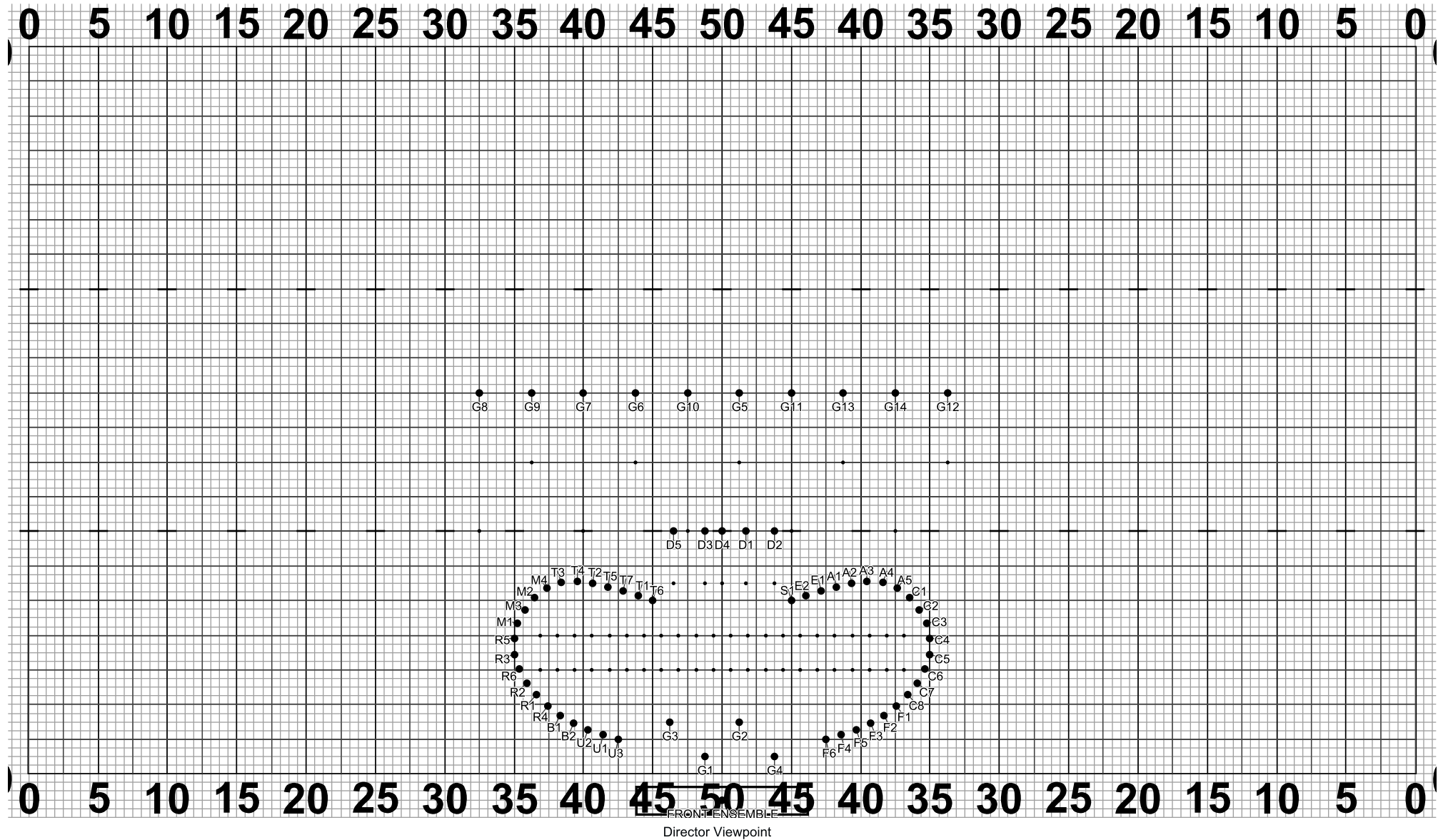
Set #17 Counts: 16 Measures: 28-31

Move 16
Guard can face backfield and adjust paths to facilitate pass through



Set #18 Counts: 8 Measures: 32-33

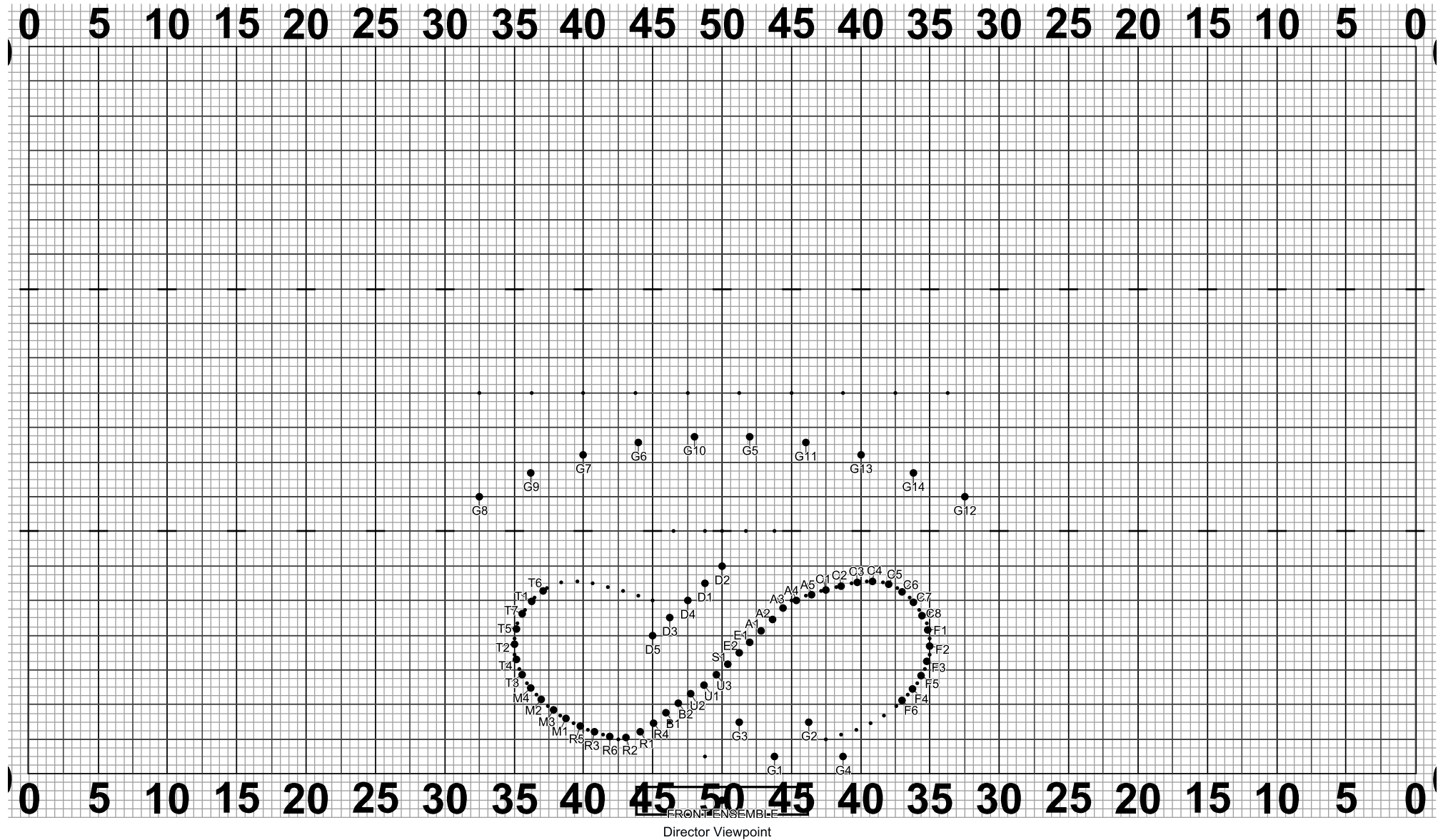
Hold 8



FRONT ENSEMBLE
Director Viewpoint

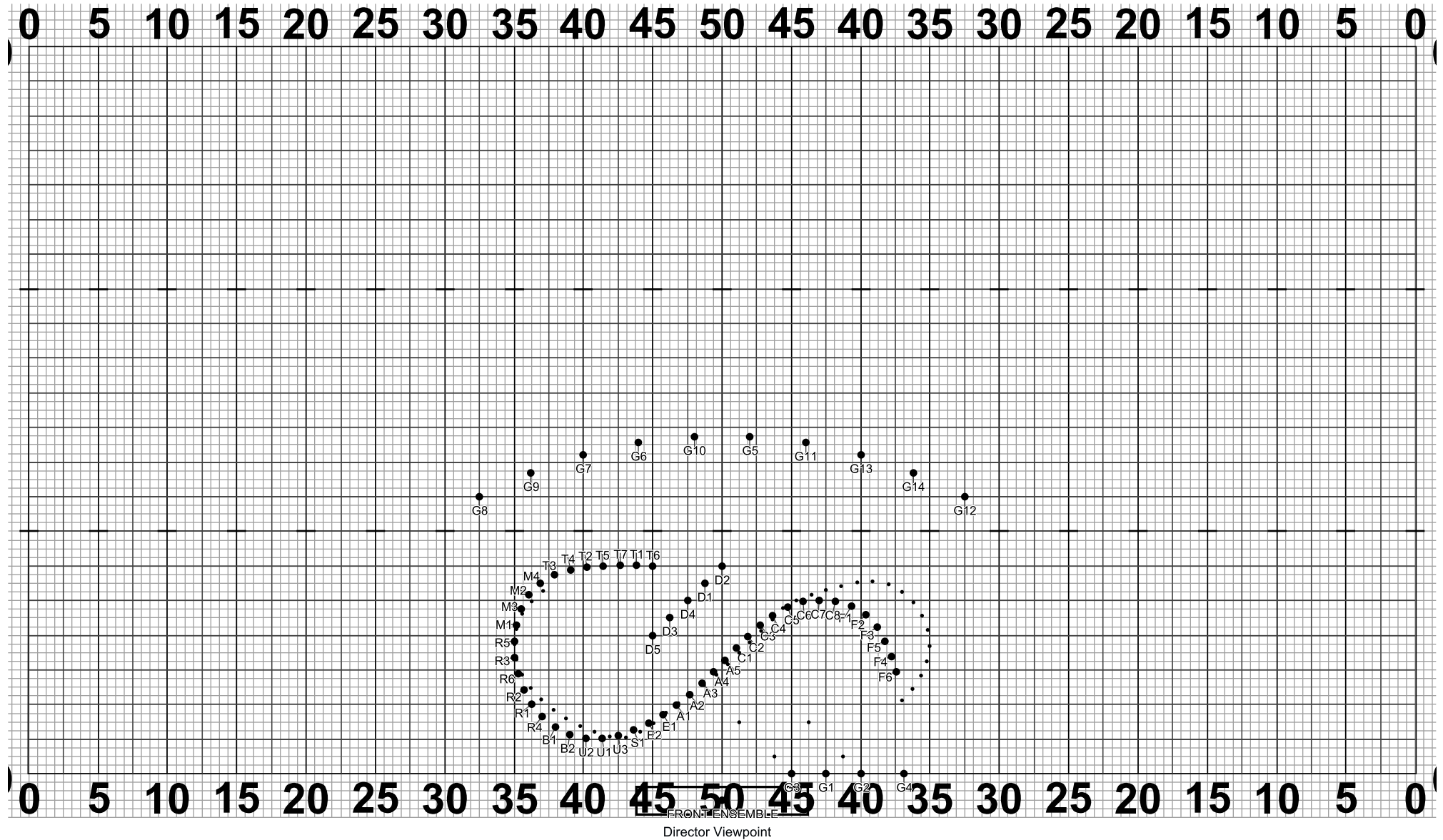
Set #19 Counts: 12 Measures: 1-4

Move 12
NOTE: This starts the next movement ("Part 2") of the PDF score.



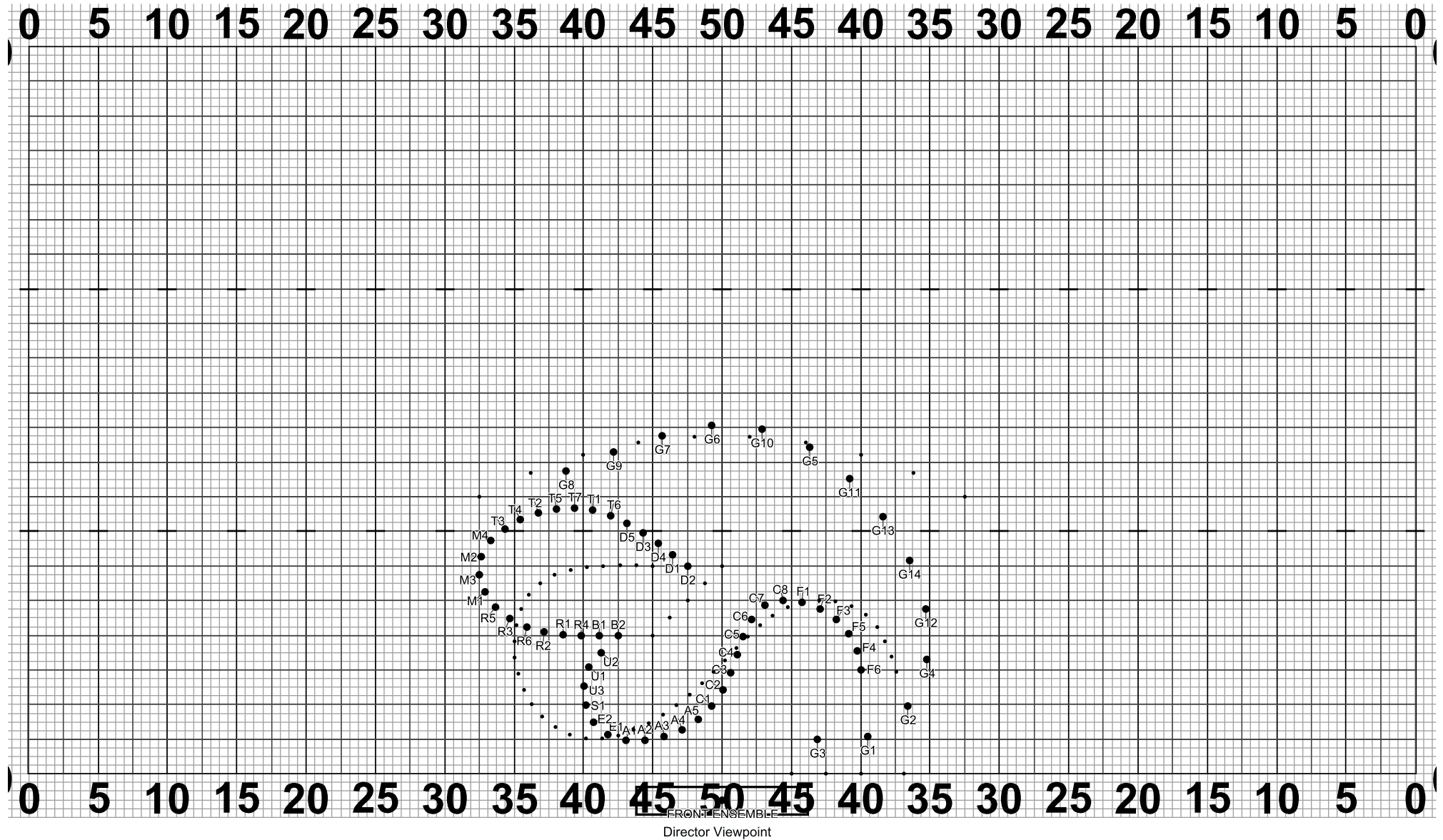
Set #20 Counts: 12 Measures: 5-8

Move 12
Guard take as much time as needed to change equipment. You have flexibility because set 21 is a hold for the guard.
Play around with guard coming back out sequentially.



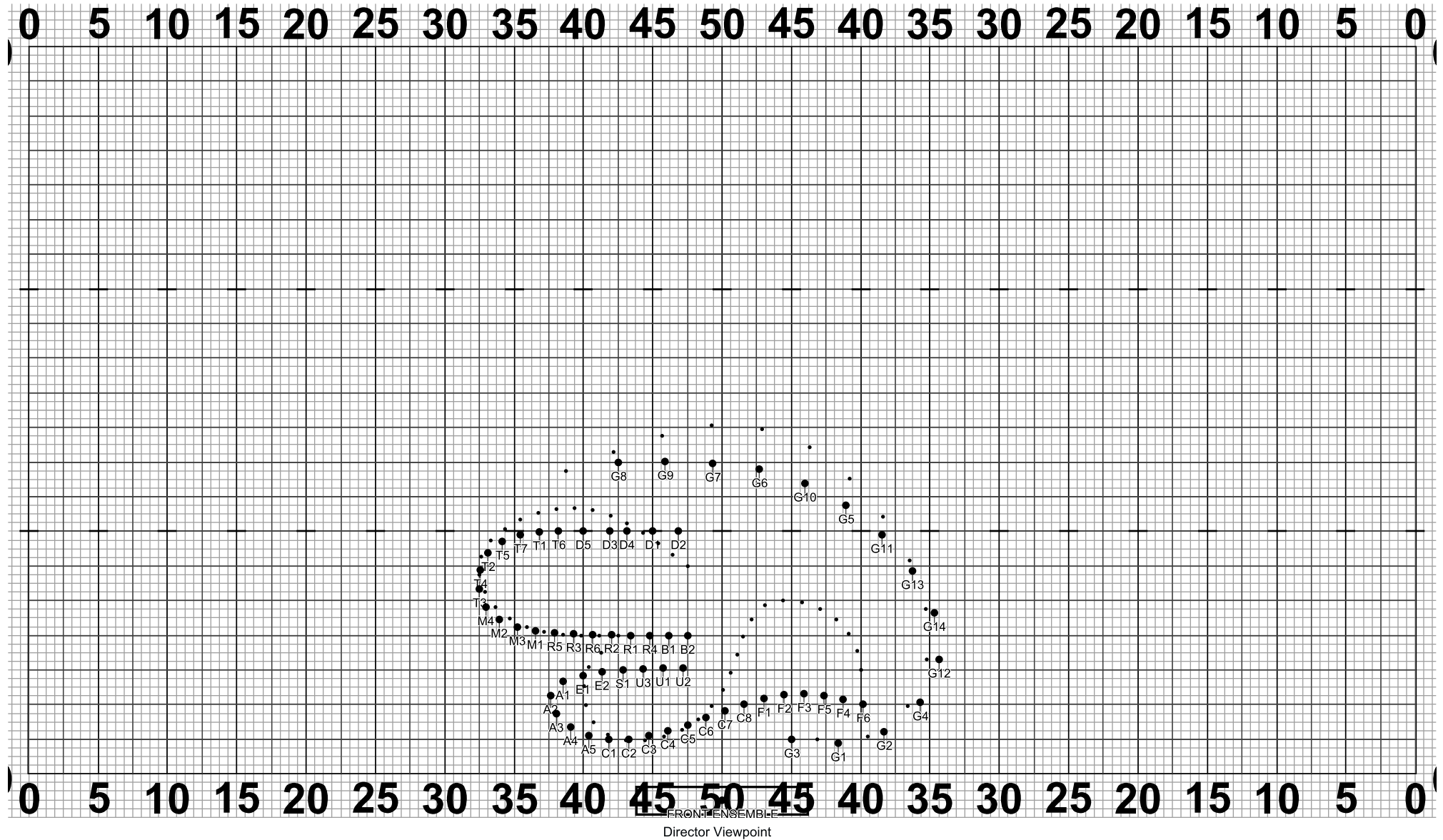
Set #21 Counts: 12 Measures: 9-12

Move 12



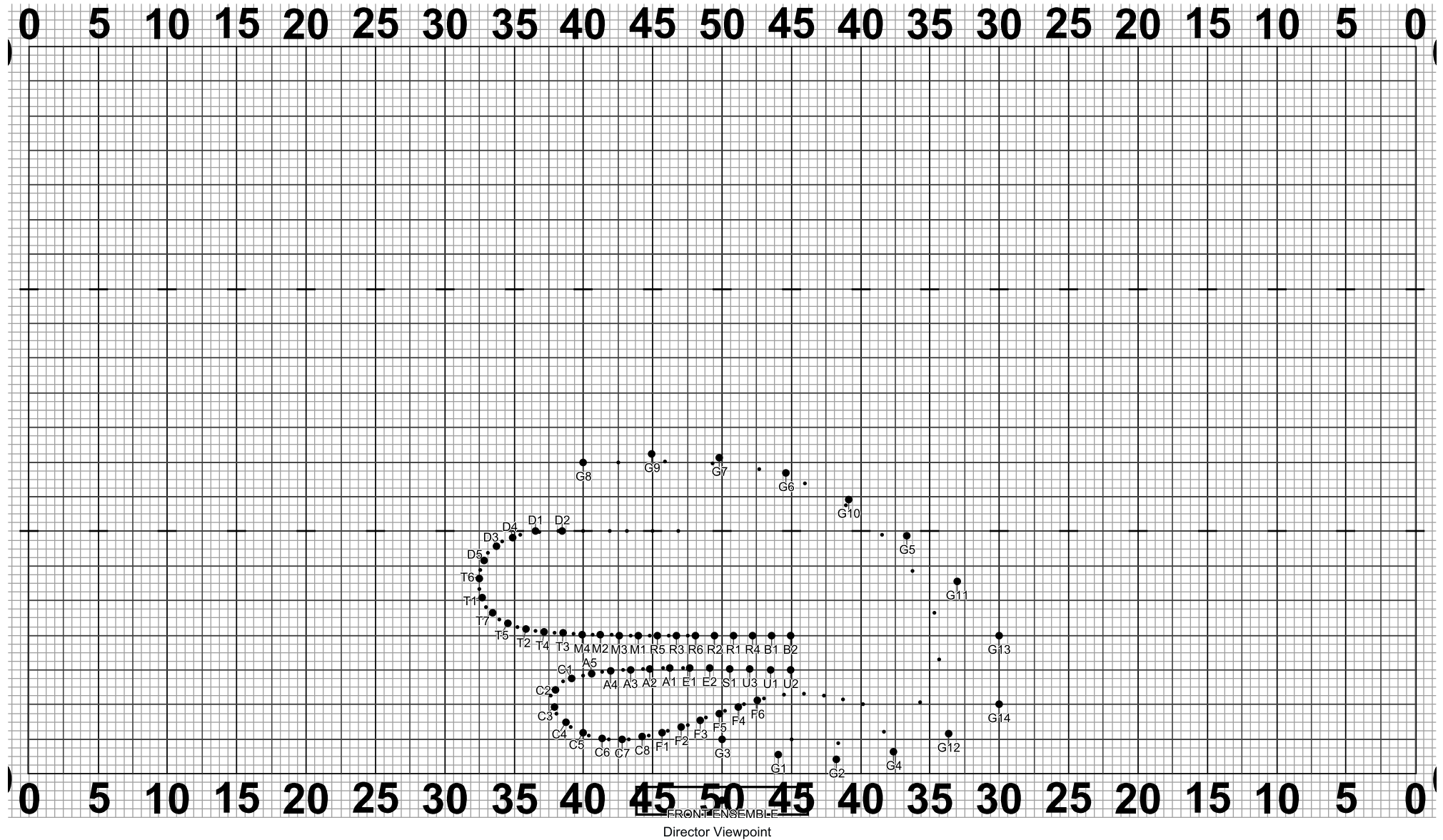
Set #22 Counts: 12 Measures: 13-16

Move 12



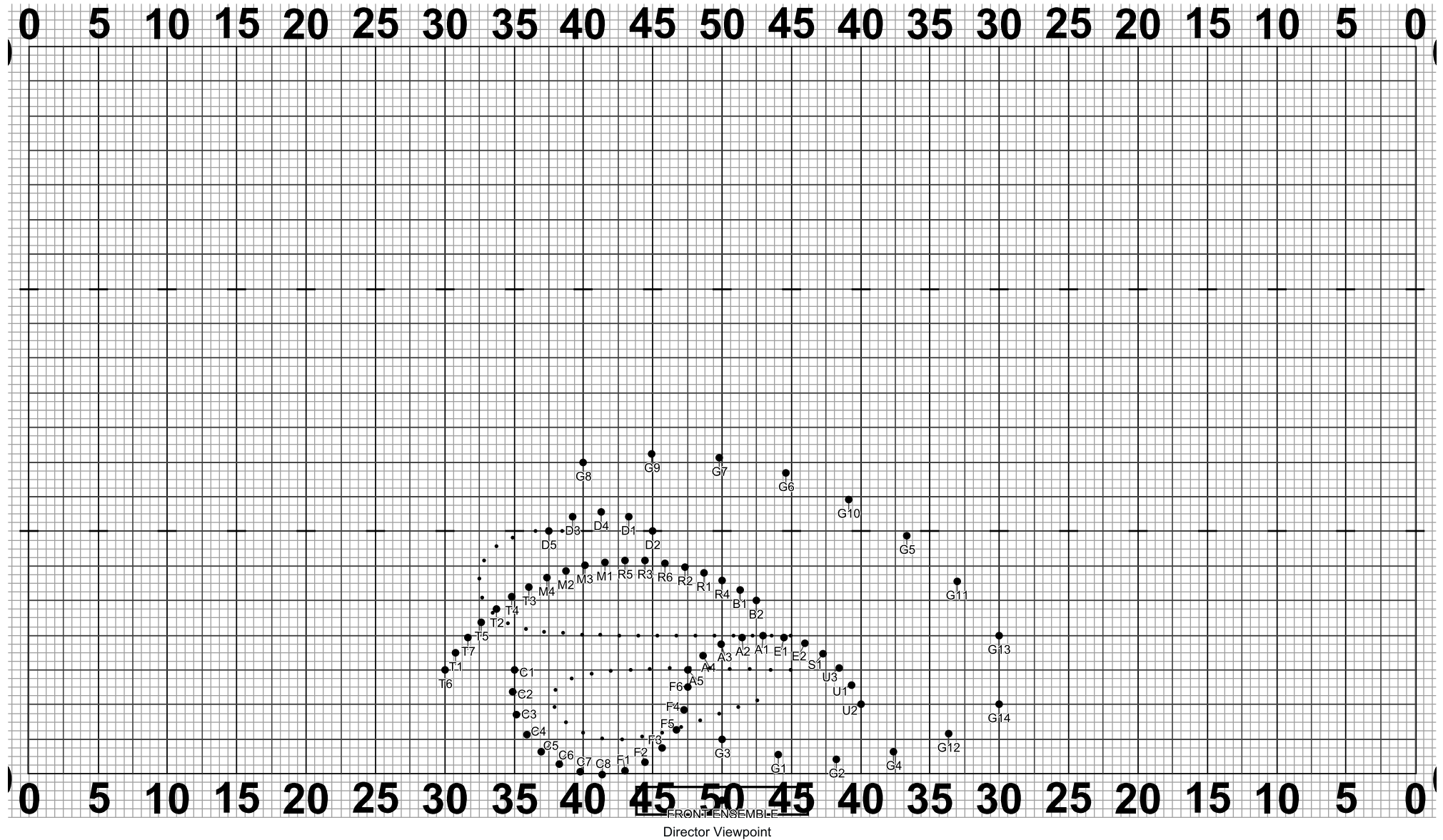
Set #23 Counts: 12 Measures: 17-20

Move 12



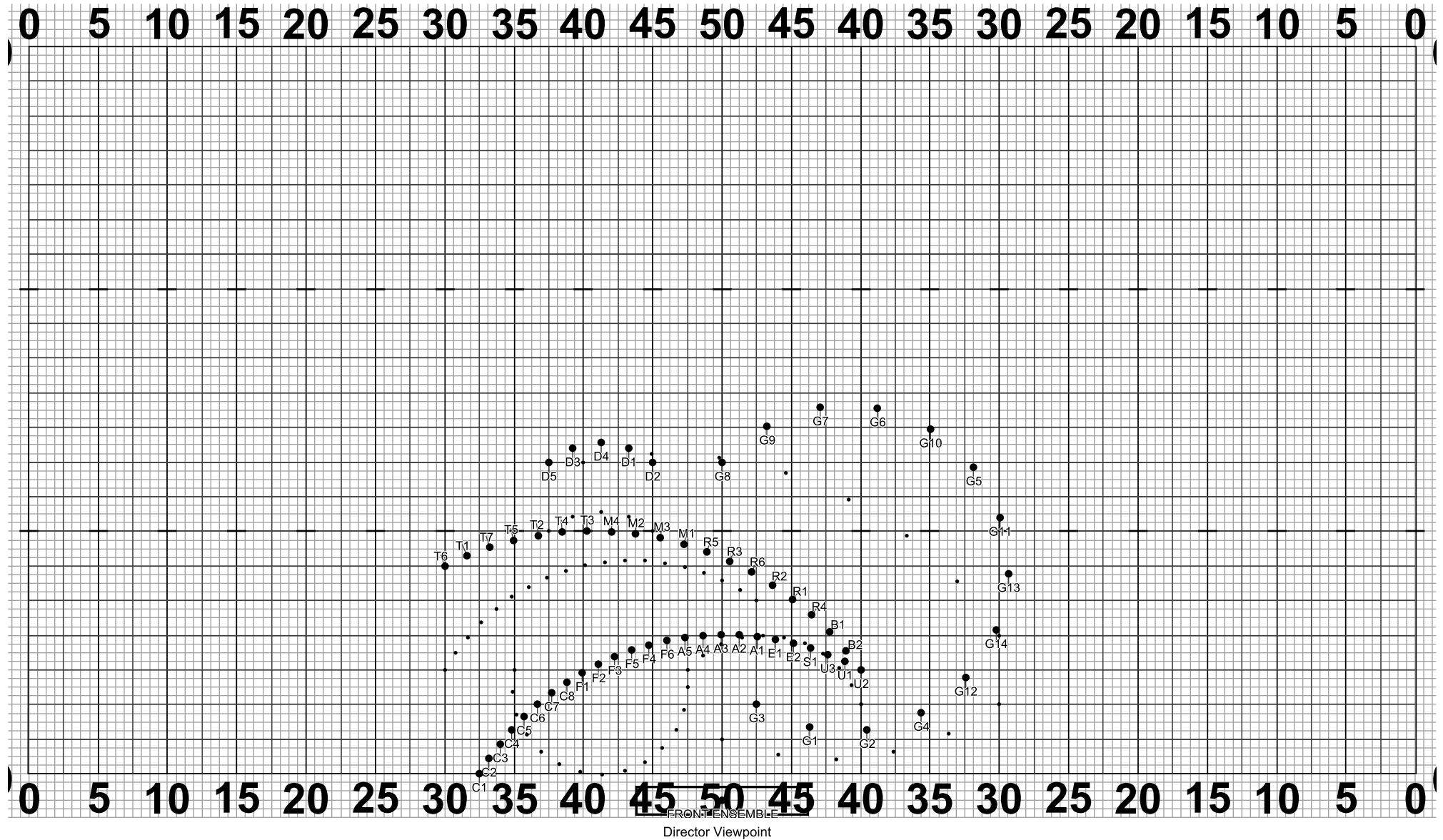
Set #24 Counts: 12 Measures: 21-24

Move 12
Both wind lines are following the leader



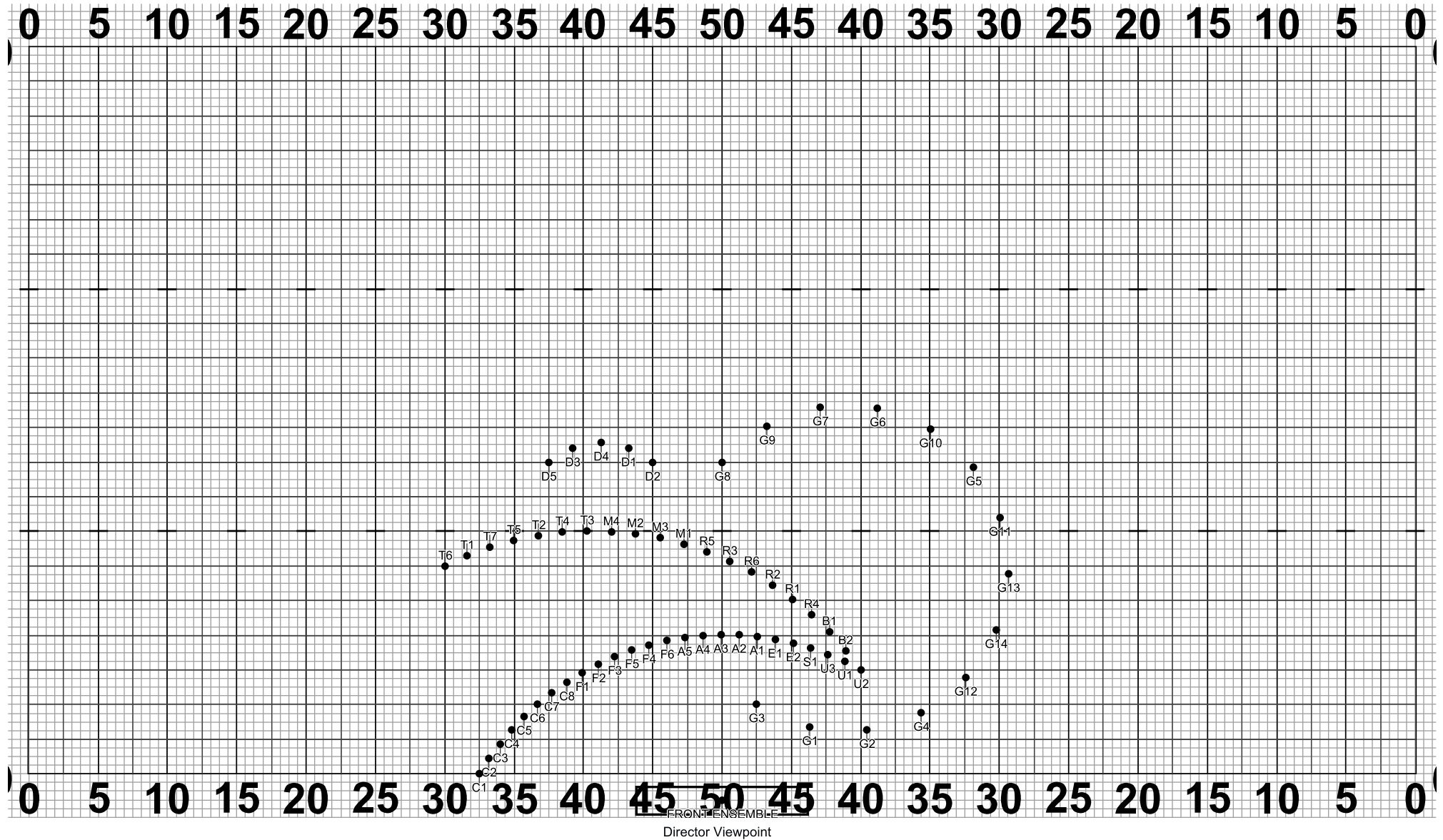
Set #25 Counts: 12 Measures: 25-28

Move 12



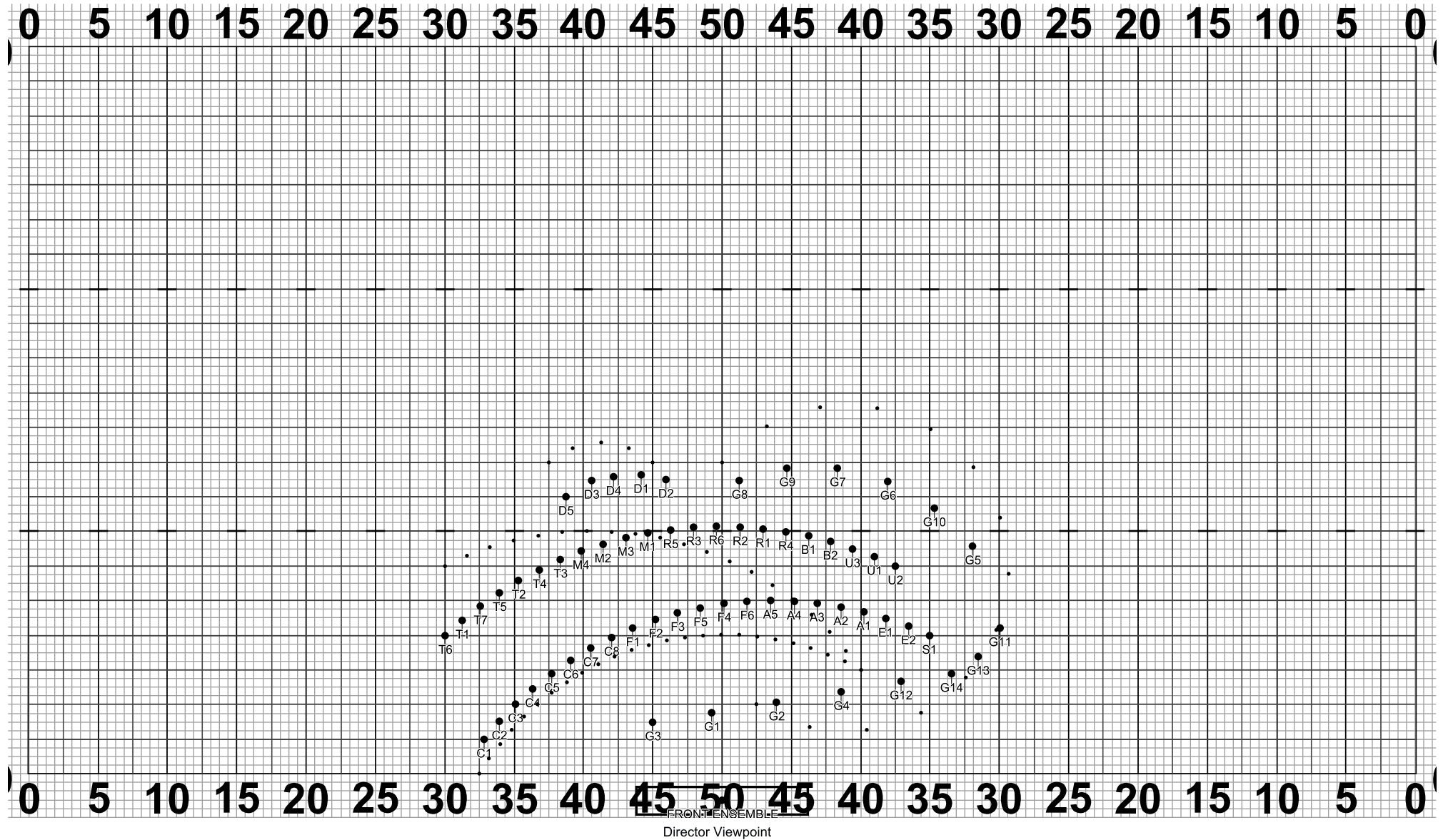
Set #26 Counts: 12 Measures: 29-32

Move 12



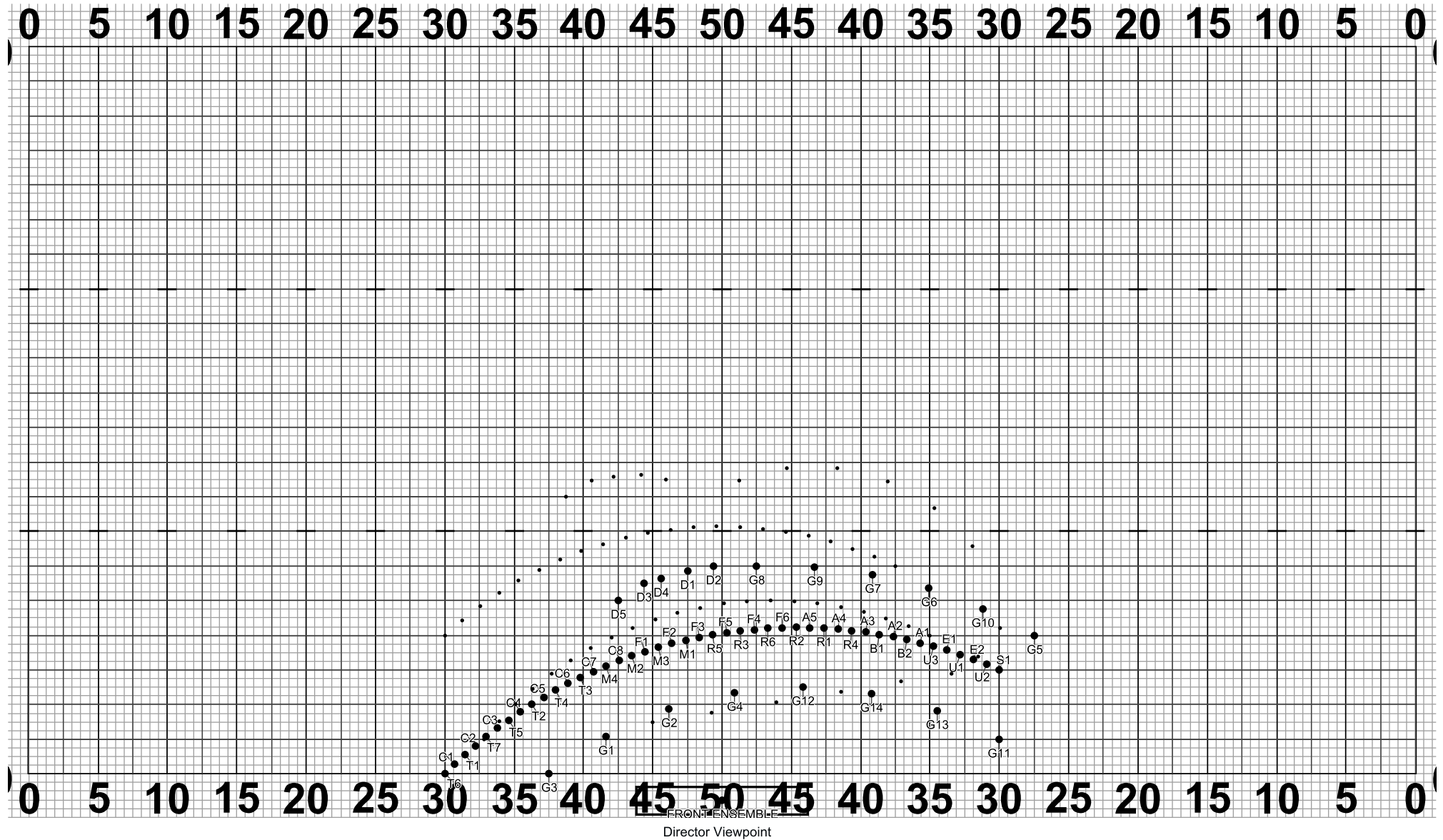
Set #27 Counts: 12 Measures: 33-36

Hold 12



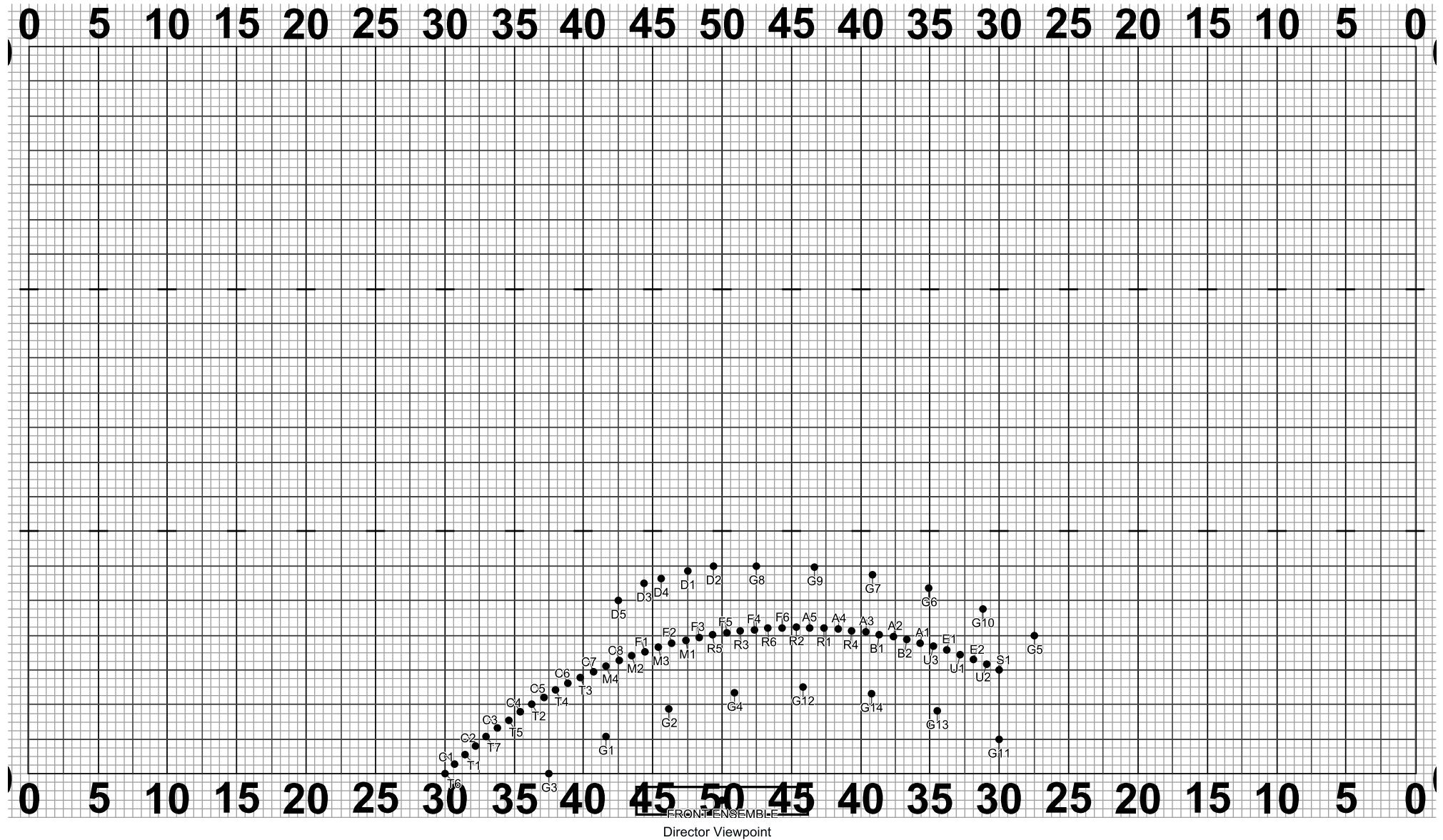
Set #28 Counts: 12 Measures: 37-40

Move 12



Set #29 Counts: 12 Measures: 41-44

Move 12



Set #30 Counts: 30 Measures: 45-54

Hold 30